



IRIS Salmonella®

用於食品和環境樣品中，快速檢測所有沙門氏菌。

■ 可靠：

依據 ISO / FDIS 16140-2 標準，通過 AFNOR 認證的驗證方法，超過 25 克的樣品也能檢測。

■ 效能：

能檢測所有沙門氏菌。

■ 判讀容易：

透明瓊脂和粉紅色 - 洋紅色沙門氏菌菌落與從藍色到深藍色出現的次級菌群之間具有出色的對比度。

■ 快速：

配合試劑，可在 37 小時內進行陰性篩查並在兩分鐘內判讀出結果。

■ 簡便好操作：

只需一個 IRIS Salmonella® 和含有 supplemented 的填充液，就能適用於所有實驗室。

樣品 ≤ 25



(x) g of sample in 9 (x) mL of *Salmonella* Enrichment medium ②

+

Add selective IRIS *Salmonella*® supplement



Green coloration

④ 培養條件
16 to 24 hr
41.5 ± 1°C

樣品 ≤ 25 ①

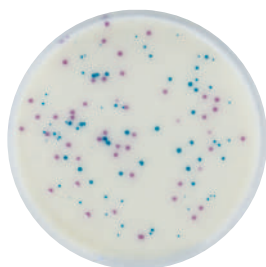
④ 培養條件
18 to 24 hr
41.5 ± 1°C

Plate 10 µL on IRIS *Salmonella*® Agar



D+1

D+1



④ 培養條件
24 to 3 hr
37 ± 1°C

④ 培養條件
24 to 3 hr
37 ± 1°C



Reading and confirmation

Non characteristic colonies :
ABSENCE of *Salmonella*

Characteristic magenta colonies:
PRESUMPTIVE PRESENCE of
Salmonella



Latex coagulation test :
CONFIRM' *Salmonella*

備 註

① SIRIS *Salmonella* method is also validated for the detection of *Salmonellae* in samples from 50 g to 375 g in milk powder (including infantile formula with and without probiotics) and from 50 g to 125 g for flours and croquettes in feedstuffs.

② For the samples greater than 25g, preheat the *Salmonella* Enrichment medium at 41.5° C.

Salmonella Enrichment and IRIS *Salmonella*® Agar can be stored up to 3 days at 2-8 ° C before plating or reading (except the enrichment for the sample greater than 25 g in feedstuffs).

Salmonella Enrichment can be used for the preparation of dilutions.

IRIS *Salmonella*® Agar may be used as the second medium according to NF EN ISO 6579.

訂購資訊

Salmonella Enrichment

BK194HA/GC – 500 g bottle/5 kg drum
BM13608 – 10 vials of 225 mL
BM13708 – 3 flexible bags 3 L
BM14408 – 2 flexible bags 5 L

Salmonella Enrichment + Tween®80

BM16308 – 3 flexible bags 3 L
BM19808 – 2 flexible bags 5 L
BM21608 – 10 vials of 225 mL

Salmonella Enrichment double-strength buffered

BM20008 – 2 flexible bags 5 L
BM20108 – 10 vials of 225 mL
BK225HA/GC – 500 g bottle/5 kg drum

IRIS *Salmonella*® supplement

BS07808 – 10 vials of 50 mL
BS07708 – 120 tablets qsp 225 mL
BS09308 – 120 tablets qsp 90 mL

IRIS *Salmonella*® Agar

BM16008 – 20 Petri dishes (Ø90mm)
BM16108 – 120 Petri dishes (Ø90mm)
BK212HA – 500 g bottle

CONFIRM' *Salmonella*

BT01108 – Latex agglutination kit
(50 tests)