



Crono & Salmo DUO (CSD)

用於含有或不含益生菌的奶粉、嬰兒穀物和環境的樣品中，檢測沙門氏菌屬、克羅諾桿菌屬。

■ 可靠：

依據 ISO / FDIS 16140-2 標準，通過 AFNOR 認證的驗證方法。

■ 簡易、聰明：

同時可以檢測沙門氏菌屬和克羅諾桿菌屬。

■ 容易操作：

可以使用 1/4 稀釋液增菌檢測。



Salmonella spp.

Cronobacter spp.



(x) g sample in 9 (x) mL or (x) g sample in 3 (x) mL ①
of Salmonella broth Enrichment ②

+

Introduce 0.1 mL/g sample of
Supplement Crono & Salmo DUO (CSD)

+

Addition of a-amylase for cereals (0.1 g/L)



⊕ 培養條件 16 to 22 hr at 41.5 ± 1°C for weighs up to 50g

or

⊕ 培養條件 18 to 24 hr at 41.5 ± 1°C for weighs from 50 to 375g

J+1



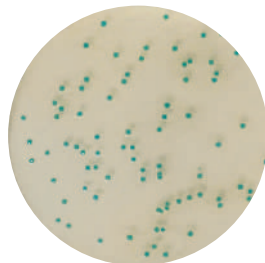
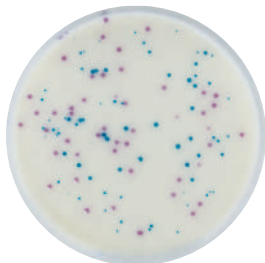
J+1

Inoculating 10 µL on
IRIS Salmonella® Agar

Inoculating 10 µL sur
CCI Agar

⊕ 培養條件
24 to 3 hr
37 ± 1°C

⊕ 培養條件
24 to 3 hr
41.5 ± 1°C



Characteristic magenta colonies:
PRESUMPTIVE PRESENCE of
Salmonella ③

Characteristic blue colonies :
PRESUMPTIVE PRESENCE of
Cronobacter ③

備註

- ① The dilution step can be carried out on the 10th scale for weighing from 10 to 50 g and on the 1/4 scale for weighing from 50 to 375 g. Preheat the broth for weighing from 50 to 375 g.
- ② In the protocol involving a 1/4 dilution, the peptone water buffered «salmonella enrichment» can be used for acidic samples. For samples with fat content ≥ 20 % use Salmonella enrichment + Tween 80.
- ③ Please refer to the data sheet of IRIS Salmonella® Agar and CCI Agar for more information.

訂購資訊

Supplement Crono & Salmo DUO (CSD)

BS09508- 10 vials of 100 mL
BS09908- Comprimés Qsp 10 g
BS10008- Comprimés Qsp 25 g

Salmonella Enrichissement

BK194HA- Bottle 500 g
BK194GC- Drum 5 kg
BM13608- 10 vials of 225 mL
BM13708- 3 flexible bags of 3 L
BM14408- 2 flexible bags of 5 L

Salmonella Enrich. double-strength

BM20008- 2 flexible bags of 5 L
BM20108- 10 vials of 225 mL

Salmonella Enrich. + Tween 80

BM16308- 3 flexible bags of 3 L
BM19908- 2 flexible bags of 5 L

Salmonella Enrich. double-strength + Tween 80

BM22008- 2 poches souples 5 L

IRIS Salmonella® Agar

BM16008- 20 Petri plates (Ø90 mm)
BM16108- 120 Petri plates (Ø90 mm)

CCI Agar

BM15408- 20 Petri plates (Ø90 mm)
BM22608- 120 Petri plates (Ø90 mm)