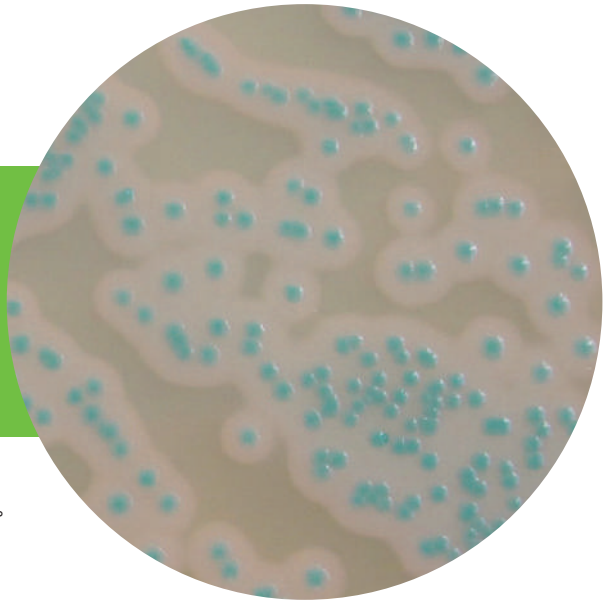




# COMPASS® *Bacillus Plus*

在 21 小時內，可檢測和計數食物中，是否有蠟狀芽孢桿菌菌種。



## ■ 可靠：

依據 ISO / FDIS 16140-2 標準，通過 AFNOR 認證的驗證方法。

## ■ 簡單：

特有的藍綠色菌落和對次級菌群的出色抑制。

## ■ 效能：

有效的培養，針對蠟狀芽孢桿菌的特異性檢測，包含細胞毒性芽孢桿菌和卵磷脂酶生產弱或陰性的菌株。

## ■ 快速：

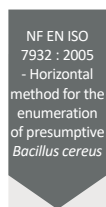
21 小時內完成檢測和計數。

### 備註

- ① BPW, Tryptone-salt or any other diluent recommended by the corresponding part of NF EN ISO 6887 standard.
- ② Prepare COMPASS® *Bacillus Plus* medium with a bottle of base, selective supplement and 10mL sterile supplement.
- ③ Count Petri dishes containing less than 150 characteristic colonies.
- ④ Presence of an opaque halo around *Bacillus cereus* group colonies with phospholipase activity.



1 step  
in 21 h



Confirmation  
- D+1/D+2  
- J+3  
2 steps  
in 42 h to 72 h

### 接種

Transfer 0.1 mL onto pre-poured plates of COMPASS® *Bacillus cereus* agar ②



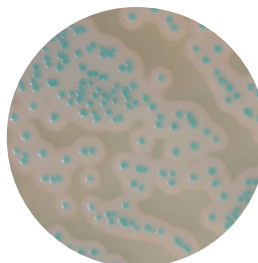
(x) g of samples + 9 (x) mL of diluent ①

### 接種

Transfer 1 mL to the bottom of empty sterile Petri dish and add approximately 15 mL of COMPASS® *Bacillus cereus* ② medium  
Mix and let solidify

⊕ 培養條件 21 ± 27 hr at 30 ± 1°C

Reading and enumeration of characteristic colonies ③



### *Bacillus cereus*

Characteristic colony : pale blue-green to blue-green color, with a diameter > 1 mm ④ for surface inoculation and a diameter > 0,5 mm ④ for pour plate inoculation

### 訂購資訊

#### COMPASS® *Bacillus Plus* Agar

- BM21308 – Petri dishes (Ø 90mm)
- BM13008 – 10 flacons 100 mL (base)
- BK189HA – 500 g bottle

#### Selective supplement

#### for COMPASS® *Bacillus cereus* Agar

- BS06908 – 10 vials qsf 100 mL
- BS08508 – 10 vials qsf 500 mL

#### Sterile egg yolk emulsion

- BS06608 – 10 vials of 50 mL

#### Complete supplement for

#### COMPASS® *Bacillus Plus* Agar coming soon

- BS09808 – 10 vials of 50 mL